

PLUMBERS INSTALLATION INSTRUCTIONS

Installation

- 1) Check in-wall depth (dimension 'A' in Fig. 1) to ensure correct length spindle (3) has been selected (see Table 1).
- 2) Check seats in recess tap bodies (1) are in good condition and free of foreign materials. Reseat if required.
Important : All pipework must be thoroughly flushed prior to installation, to remove all foreign matter.
- 3) Fully open tap spindle (3) in tap head assembly (2). Ensure fibre washer and jumper valve are in position as shown.
- 4) Screw tap head assembly (2) into recess tap body (1) by hand and tighten using suitable tube spanner.
- 5) Screw on wall flange (4) and tighten fully by hand against wall/tile face taking care not to damage the decorative finish.
- 6) Fit handle assembly as follows:-
 - i) Turn both spindles to the fully closed position.
 - ii) Place retaining nut (6) over spindle (3), with slot facing flange (4).
 - iii) Place retaining clip (7) into groove at bottom of spline in spindle (3).
 - iv) Ensure handle insert (8) is in position in handle (9). Fit handle (9) to spindle (3), position to suit. Push handle (9) firmly down until it bottoms internally.
 - v) Screw retaining nut (6) into handle and tighten using spanner (5) provided.

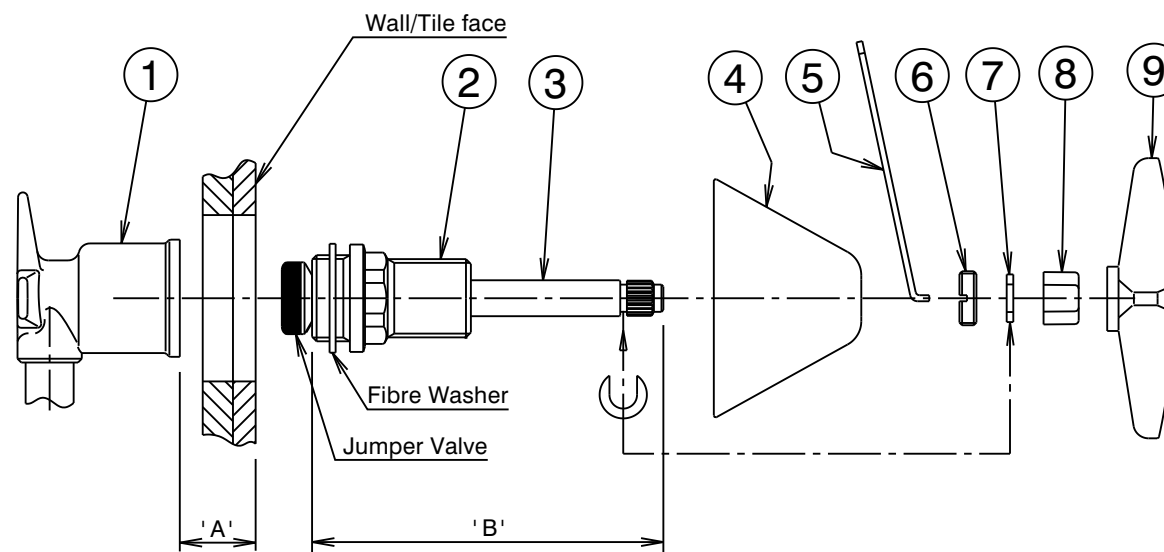


Fig. 1

IMPORTANT

Pressure & Temperature Requirements.

- Hot and cold water inlet pressures should be equal.
- Static inlet pressure range : 150 -1000 kPa
New Regulation :-500 kPa maximum static pressure at any outlet within a building.
(Ref. AS/NZS 3500.1-2003, Clause 3.3.4)
- Maximum hot water temperature : 80°C.

Table 1

Dimension 'A"	Tap Head Ass'y	Dimension 'B'
0 - 13mm	Standard Length	92.5mm
13 - 26mm	13mm Extended	105.5mm