



APPLICATIONS



TOILET



HAND BASIN



SHOWER



ATS 5200.101
Certificate No. 23048
Manufacturer: SFA
Brand: Saniflo

Product Reference:
SA81

SANIACCESS® 3

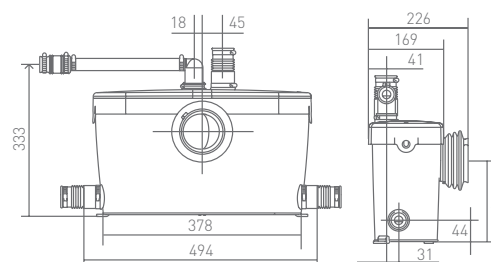
Designed to provide easy access for en-suite bathroom applications. Convenient access panels allow you to service and maintain the macerator without having to remove it.



WHY CHOOSE THIS PRODUCT?

- Easy service access
- Suitable for one toilet, basin and shower
- Easy maintenance without removal of unit
- Macerator needs minimum 4.5 L of unrestricted flush for optimal function
- Quiet technology
- Ideal for adding a complete bathroom or en-suite anywhere

TECHNICAL CHARACTERISTICS	
Discharge Pipework	20 mm
Motor Power	400 Watts
Voltages	220-240 V/50 Hz
Working Waste Water Temp	35°C
Product Weight	6.4 kg
Overall Measurements	494 x 333 x 169 mm
Inlet Pipework	40 mm
IP Rating	IP44

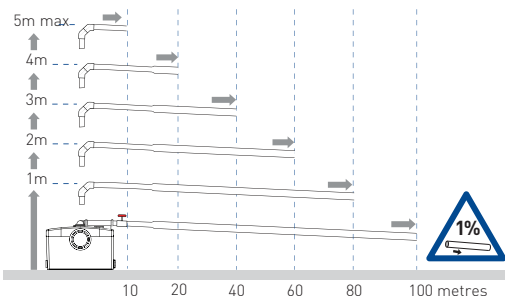


Double access:

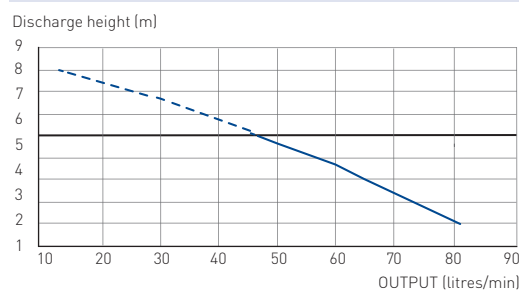
- A Direct access to the blade if maintenance is required
- B Direct access to electric components

VERTICAL/HORIZONTAL PERFORMANCE

Increase size of horizontal run by one pipe size after 5m.
All horizontal pipework requires a minimum of 1:100 fall.



FLOW RATE PERFORMANCE CHART



Made in France to the highest standards, needs to be installed by a licensed plumber